

EXPLORER 510

Ultra-Portable Satellite Companion

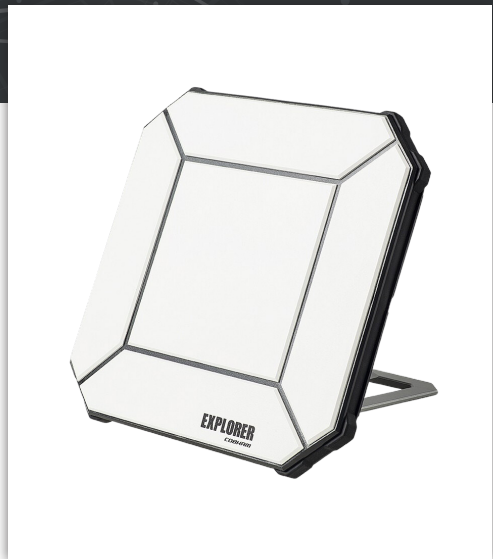
EXPLORER BGAN and the ideal combination of performance and portability. The durable magnesium casing and a dust and water resistant design makes the EXPLORER 510 the perfect choice when working off the beaten track, but still dependant on a reliable connection.

Portable performance

Smaller than a standard laptop and weighing less than 1.4 kg, this satellite terminal is easy to carry along when travelling the world.

It supports your need for performance and provides simultaneous high quality voice and broadband access at speeds up to 464 kbps.

Connect the optional EXPLORER LTE Modem to the USB port and turn your device into a true communication SmartHub. Use local cellular net when available and BGAN if no other option.



Satellite connectivity made simple

EXPLORER 510 is easy to set-up and to operate. The user interface is intuitive and can be accessed from your PC or any kind of smart device.

With the EXPLORER Connect App you can use your smart device to make calls or easily access the internet even in areas with no terrestrial or cellular coverage. The EXPLORER Connect App with a SIP softphone will be available on Android and IOS.

SPECIFICATIONS

Dimensions:

Total H / W / D: 202 / 202 / 51.8 mm
7.8 / 7.8 / 1.6 inches

Weight (incl. battery): 1.4kg / 3.1lbs

Data capabilities:

Standard IP: Up to 464 kbps
Streaming IP: 32, 64, 128 kbps

Voice capabilities:

Standard voice: 4 kbps
Premium voice: 3.1 kHz audio, 64 kbps

Text capabilities:

SMS: 160 characters

Inmarsat frequencies: 1518.0 - 1525.0 MHz (Rx) (EMEA)
1525.0 - 1559.0 MHz (Rx)
1626.5 - 1660.5 MHz (Tx)
1668.0 - 1675.0 MHz (Tx) (EMEA)

EIRP: 15.1 dBW ±1dB

User interface: Two LED (WLAN, Status), 1 Power Button
USB Host, Cobham web interface

Languages: UK, FR, DE, ES, RU, JP and CN

Approvals: CE, FCC, IC

INTERFACES

WLAN Access Point:

Standard: IEEE 802.11 b/g/n

1 x USB host interface:

Version: 2.0 (host)

Charging: Up to 1A

1 x BGAN SIM-Card slot

ENVIRONMENTAL CONDITIONS

Temperature:

Operational (ambient): -25°C to +55°C / -13°F to +131°F
Storage (excl. battery): -40°C to +80°C / -40°F to +176°F

Battery storage temperature:

1 month: -20°C / -4°F to +60°C / +140°F
3 months: -20°C / -4°F to +45°C / +113°F
1 year: -20°C / -4°F to +20°C / +68°F

Relative humidity:

95% non-condensing at +40°C/+104°F

Robustness:

0.5 m/1.64 ft drop on concrete
(operational, 95% survival)

Storage temperature:

-40°C to +80°C
-40°F to +176°F

Water and dust: IP-66 Compliant (TBC)

EXPLORER 510

Ultra-Portable Satellite Companion

POWER

DC input range: 10.5-32VDC

Power consumption:

- Standby / transmit: 24 - 48 VDC
- During charging: 38W (max.)
- Connector type: 2.5mm EIAJ RC-5320-IV

AC/DC power supply:

- Input: 100-240VAC, 47-63Hz, 50W
- Output: 19VDC

Built-in Battery: Lithium ion (rechargeable)

- Stand-by time (TBC): 36h, 0°C/+32°F to 55°C/+131°F
- Standard call: 3h, 0°C/+32°F to 55°C/+131°F
- Premium voice call: 1h30m, 0°C/+32°F to 55°C/+131°F
- Receive time, max: 3h30m @ 128kbps (25°C / 77°F)
- Transmit time, max: 2h15m @ 128kbps (25°C / 77°F)
- Min. number of charges: 300
- Recharge time: Less than 3 hours
- Charge temperature: 0°C / +32°F to +45°C / +113°F

OTHER FEATURES

EXPLORER Connect App for IOS and Android*:

The App includes a SIP Softphone converting your Smart Device into a satellite phone, Terminal Access to control your BGAN and Pointing Assistance.

EXPLORER LTE Modem for USB*:

With the EXPLORER LTE Modem you can connect local cellular networks and use the EXPLORER 510 as wireless router for all your devices



PACKAGE

- EXPLORER 510 terminal
- Built-in Rechargeable Lithium Ion Battery
- EXPLORER Softbag
- USB to Ethernet Converter Cable
- 100-240VAC Power Supply
- Multi-Language Quick Start Guide
- Multi-language webserver and embedded manual (ENG, FR, DE, ES, RU, JP and CN)

ACCESSORIES

- Polemount
- EXPLORER Softbag (included in the package)
- 100-240VAC power supply
- Car Charger cable
- EXPLORER 4G USB Modem

PRODUCT NUMBER

403711A-00500
EXPLORER 510 Terminal